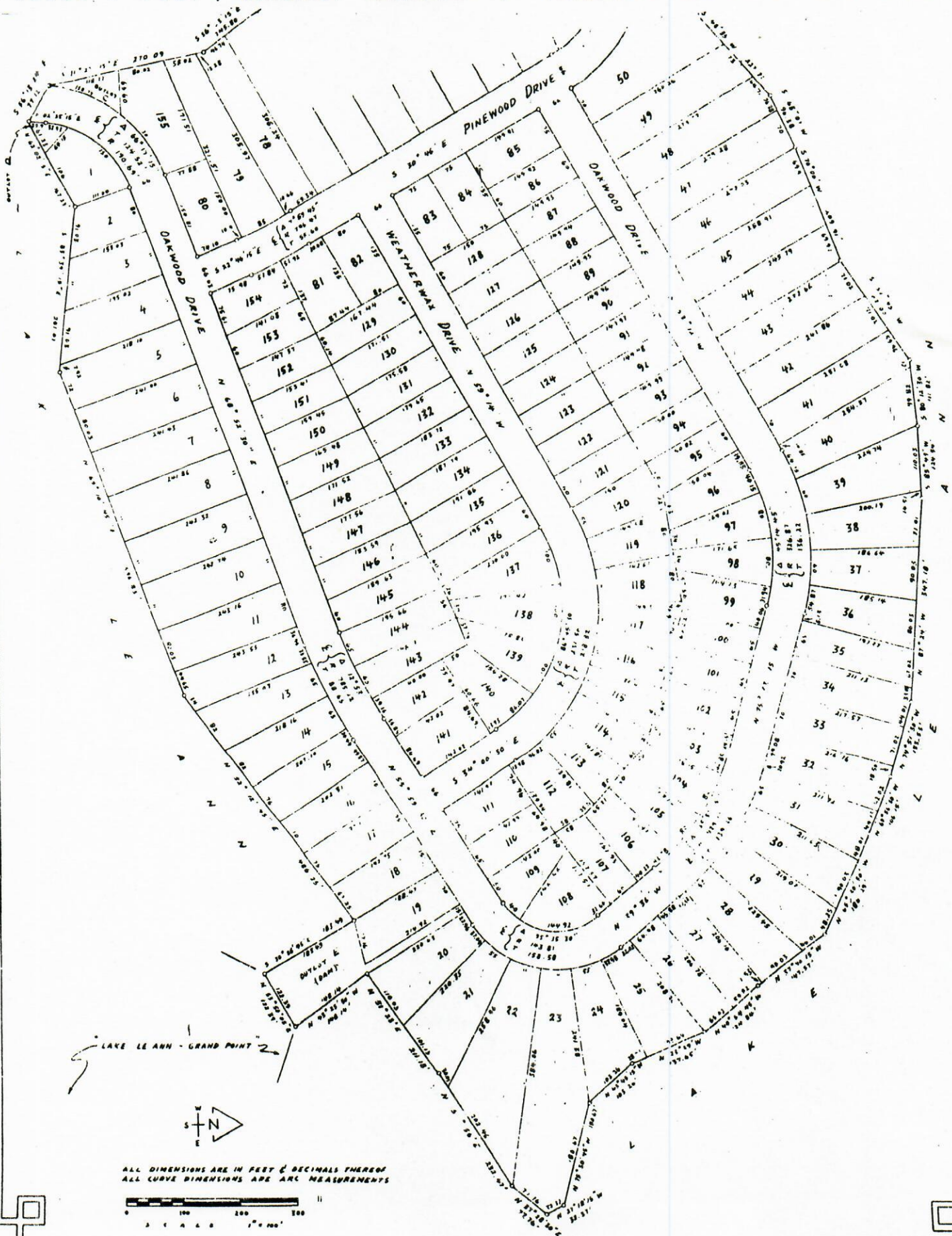


LAKE LE ANN - ROYAL SHORES

A SUBDIVISION OF A PART OF THE W¹/₂ & SE¹/₄ OF SECTION 4, TOWN 5 SOUTH
RANGE 1 WEST, SOMERSET TOWNSHIP, HILLSDALE COUNTY, MICHIGAN



ALL DIMENSIONS ARE IN FEET & DECIMALS THEREOF
ALL CURVE DIMENSIONS ARE ARC MEASUREMENTS

