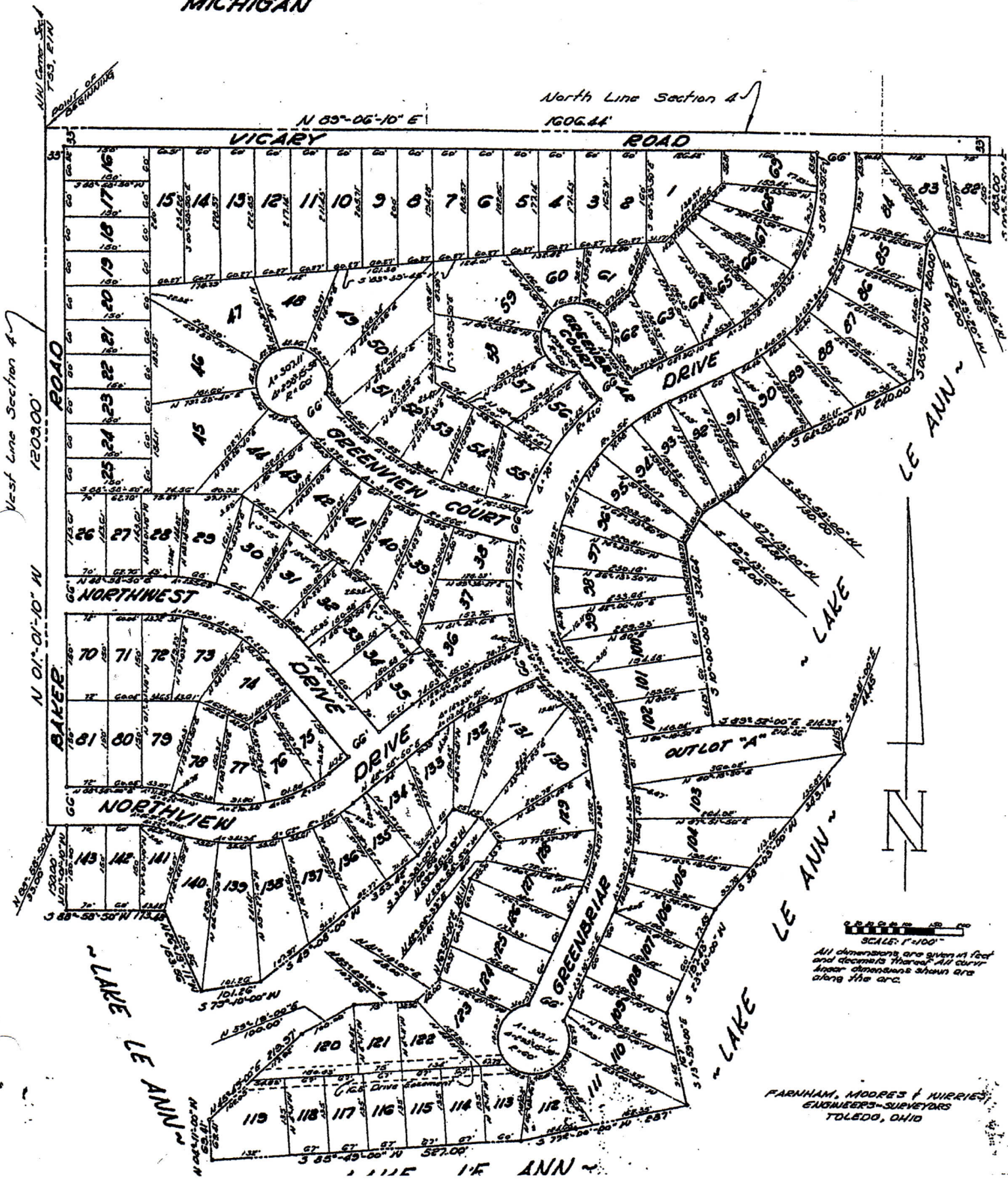


"LAKE LE ANN ~ GREENBRIAR"

BEING A SUBDIVISION PART OF THE NORTH-WEST 1/4, SECTION 4, TOWN 5 SOUTH, RANGE 1 WEST, SOMERSET TOWNSHIP, HILLSDALE COUNTY, MICHIGAN



SCALE: 1"=100'

All dimensions are given in feet and decimals thereof. All curve linear dimensions shown are along the arc.

FARNHAM, MOORE & HURRIE,
SURVEYORS-SURVEYORS
TOLEDO, OHIO