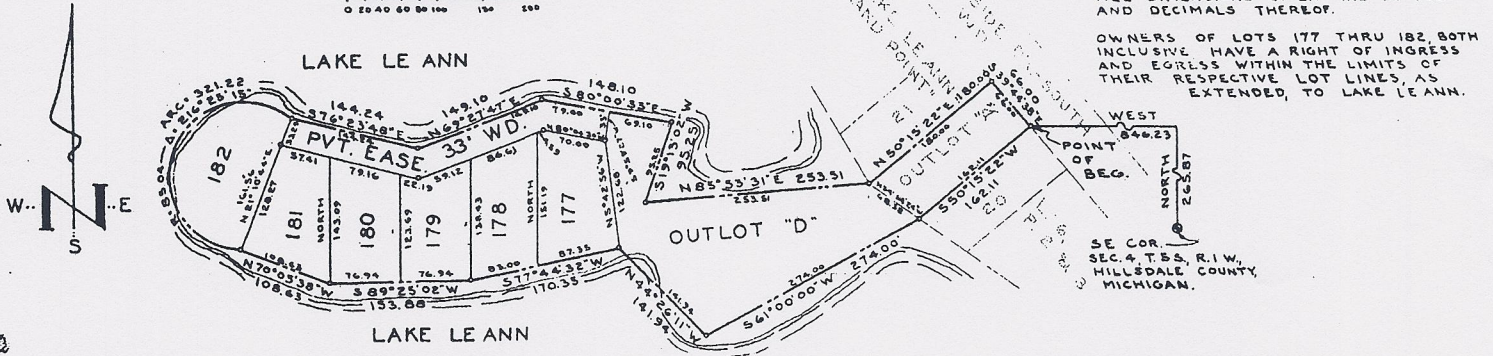
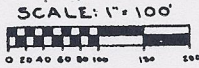


# "LAKE LE ANN - GRAND POINT NO. 3"

BEING A SUBDIVISION OF PART OF SE 1/4 SEC. 4,  
T. 5 S. R. 1 W., SOMERSET TWP., HILLSDALE COUNTY, MICH.



NOTE:  
ALL DIMENSIONS GIVEN ARE IN FEET AND DECIMALS THEREOF.  
OWNERS OF LOTS 177 THRU 182, BOTH INCLUSIVE, HAVE A RIGHT OF INGRESS AND EGRESS WITHIN THE LIMITS OF THEIR RESPECTIVE LOT LINES, AS EXTENDED, TO LAKE LE ANN.

### CERTIFICATE OF APPROVAL BY BOARD OF COUNTY ROAD COMMISSIONERS

State of Michigan ) s.s.  
County of Hillsdale )

The annexed plat was examined and approved by the Hillsdale County Board of Road Commissioners 7/11/1961.

Le Grand Smith                      Lynn Smith  
Le Grand Smith                      Lynn Smith

C. E. Drake

### COUNTY TREASURER'S CERTIFICATE RELATING TO TAXES #11

Office of County Treasurer, Hillsdale County

I hereby certify, that there are no tax liens or titles held by the State on the lands described hereon, and that there are no tax liens or titles held by individuals on said lands, for the five years preceding the 17th day of August 1961 and that the taxes for said period of five years are paid, as shown by the records of this office. This certificate does not apply to taxes, if any, now in process of collection by Township, City or Village collecting officers.

Wilfred L. Rook  
Wilfred L. Rook, Treasurer

### CERTIFICATE OF MUNICIPAL APPROVAL

This plat was approved by the board of the Township of Somerset at a meeting held July 27, 1961 and that the width of lots is in compliance with requirements of Section 30, Act. 172, of 1929, as amended.

Barbara Ford  
Barbara Ford, Clerk

### CERTIFICATE OF APPROVAL BY COUNTY BOARD OF EXAMINERS

State of Michigan ) s.s.  
County of Hillsdale )

This plat was approved by the Hillsdale County Plat Board August 14, 1961.

Elizabeth Seitz                      Wilfred L. Rook  
Elizabeth Seitz, Chairman,                      Wilfred L. Rook, County Treasurer  
Register of Deeds  
George B. Clark                      Owen Remington  
George B. Clark, County Clerk                      Owen Remington, Drain Commissioner

### SURVEYOR'S CERTIFICATE

I hereby certify that the plat hereon delineated is a correct one and that permanent metal monuments consisting of bars not less than one-half inch in diameter and 36 inches in length, or shorter bars of not less than one-half inch in diameter lapped over each other at least 6 inches with an over-all length of not less than 36 inches, encased in a concrete cylinder at least 4 inches in diameter and 36 inches in depth have been placed at points marked times (0) as thereon shown at all angles in the boundaries of the land platted, at all the intersections of streets, and at the intersections of streets with the boundaries of the plat as shown on said plat.

Anselm J. Hatt  
Anselm J. Hatt, R.L.S. #9208

### DEDICATION

KNOW ALL MEN BY THESE PRESENTS, that we, the Lake Le Ann Development Company, a Michigan Corporation, by Don L. Foote, President, and Robert M. Andrews, Secretary, have caused the land embraced in the annexed plat to be surveyed, laid out and platted to be known as "Lake Le Ann - Grand Point No. 3" Being a Subdivision of Part of SE 1/4 Sec. 4, T. 5 S., R. 1 W., Somerset Twp., Hillsdale County, Mich. and that the Private Easement as shown on said plat is hereby dedicated to the use of lot owners of said plat only and that Outlot "D" as shown on said plat is hereby dedicated to the use of all lot owners in all subdivisions abutting so called Lake Le Ann in Sections 4, 9 and 10, T. 5 S., R. 1 W., subject to the right of ingress and egress over said Outlot "D" of lot owners in said "Lake Le Ann - Grand Point No. 3".

Signed and Sealed in the Presence of:

Beulah M. Walker                      Lake Le Ann Development Co.  
Beulah M. Walker, Witness                      By Don L. Foote, President  
Harold S. Dalbee                      and Robert M. Andrews, Secretary  
Harold S. Dalbee, Witness

### ACKNOWLEDGMENT

State of Michigan ) s.s.  
County of Ingham )

On this 17th day of July 1961, before me appeared Don L. Foote, and Robert M. Andrews, to me personally known, who being each by me duly sworn did say that they are the President and Secretary, respectively, of the Lake Le Ann Development Co., a Michigan Corporation, and that the seal affixed to said instrument was signed and sealed in behalf of said corporation by authority of its Board of Directors and the said Don L. Foote and Robert M. Andrews, acknowledge the same to be the free act and deed of said corporation.

Beulah M. Walker  
Beulah M. Walker  
My Commission Expires July 24, 1961                      Notary Public Ingham County

### DESCRIPTION

The land embraced in the annexed plat of "Lake Le Ann - Grand Point No. 3" Being a Subdivision of Part of SE 1/4 Sec. 4, T. 5 S., R. 1 W., Somerset Twp., Hillsdale County, Mich. and a resubdivision of Outlot "A" of "Lake Le Ann - Grand Point" Being a Subdivision Part of S 1/2 Sec. 4, & Part of NE 1/4 Sec. 9, T. 5 S., R. 1 W., Somerset Twp., Hillsdale County, Mich. by Don L. Foote and Shirley Ann Foote, his wife, and Leo J. Mott and Lettie B. Mott, his wife, prepared by Anselm J. Hatt, Registered Professional Engineer, recorded October 31, 1960 in Liber 6 of Plats, Pages 2 and 3, Hillsdale County records, comprises 6 lots numbered 177 thru 182, both inclusive and Outlot "D", and is described as follows:

Commencing at the Southeast corner of Sec. 4, T. 5 S., R. 1 W., Hillsdale County, Mich., thence North a distance of 265.87 feet, thence West a distance of 846.23 feet to the point of beginning, which point is the East corner of Outlot "A" of said "Lake Le Ann - Grand Point":  
Thence S. 50° 15' 22" W. a distance of 162.11 feet;  
Thence S. 61° 00' 00" W. a distance of 274.00 feet;  
Thence N. 44° 26' 11" W. a distance of 141.94 feet;  
Thence S. 77° 44' 32" W. a distance of 170.35 feet;  
Thence S. 89° 25' 02" W. a distance of 153.88 feet;  
Thence N. 70° 05' 38" W. a distance of 108.63 feet to a point on a curve;  
Thence along the arc of a curve, radius 85.04 feet; interior angle 216° 25' 15", chord bearing N. 21° 10' 44" E., chord distance 161.56 feet, a distance of 321.22 feet;  
Thence S. 76° 23' 48" E. a distance of 144.24 feet;  
Thence N. 69° 27' 47" E. a distance of 149.10 feet;  
Thence S. 80° 00' 33" E. a distance of 148.10 feet;  
Thence S. 19° 13' 02" W. a distance of 25.25 feet;  
Thence N. 85° 53' 31" E. a distance of 253.51 feet to the West corner of said Outlot "A";  
Thence N. 50° 15' 22" E. a distance of 180.00 feet;  
Thence S. 39° 44' 38" E. a distance of 66.00 feet to the point of beginning.

REGISTER'S OFFICE ) s.s.  
County of Hillsdale )  
State of Michigan )  
Received for record this 27th  
day of September, A.D. 1961  
at 11:00 o'clock P.M. and Recorded  
in Liber 6 of Plats  
page 25  
Elizabeth Seitz  
Register of Deeds

EXAMINED AND APPROVED  
Date September 25, 1961  
Otis M. Smith  
OTIS M. SMITH  
AUDITOR GENERAL  
By Richard E. Lomas  
Richard E. Lomas - Plat Examiner