

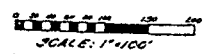
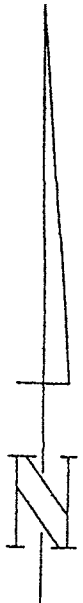
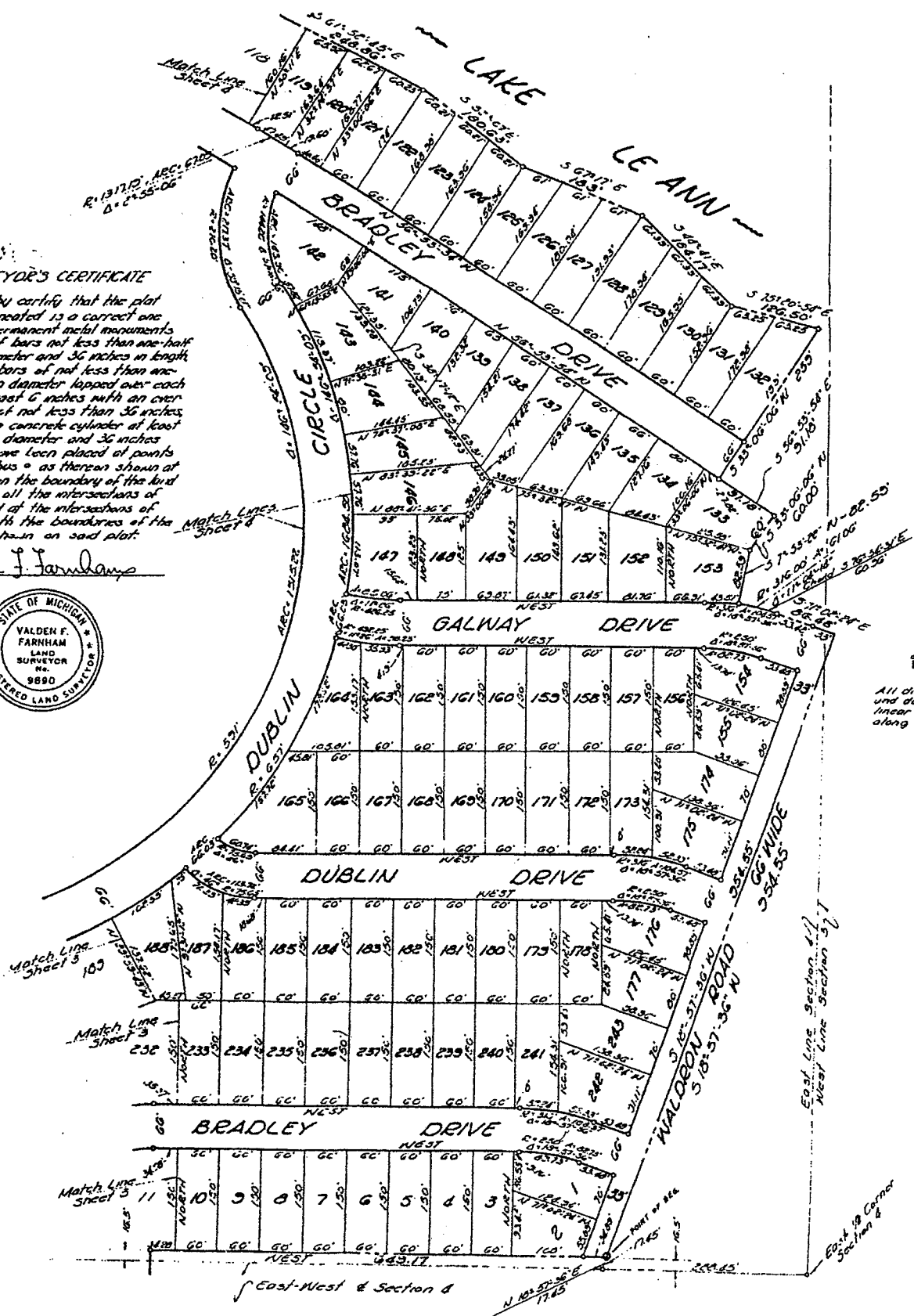
"LAKE LE ANN - CHERRY PARK"

BEING A SUBDIVISION PART OF THE EAST 1/2 OF SECTION 4, and PART OF THE NORTHWEST 1/4 OF SECTION 3, TOWN 5 SOUTH, RANGE 1 WEST SOMERSET TOWNSHIP, HILLSDALE COUNTY, MICHIGAN

SURVEYOR'S CERTIFICATE

I hereby certify that the plat herein delineated is a correct one and that permanent metal monuments consisting of bars not less than one-half inch in diameter and 36 inches in length (or shorter bars of not less than one-half inch in diameter lapped over each other at least 6 inches with an overlap length of not less than 36 inches, encased in a concrete cylinder at least 4 inches in diameter and 36 inches in depth) have been placed at points marked thus * as thereon shown at all angles in the boundary of the land platted, of all the intersections of streets, and at the intersections of streets with the boundaries of the plat as shown on said plat.

Valden F. Farnham

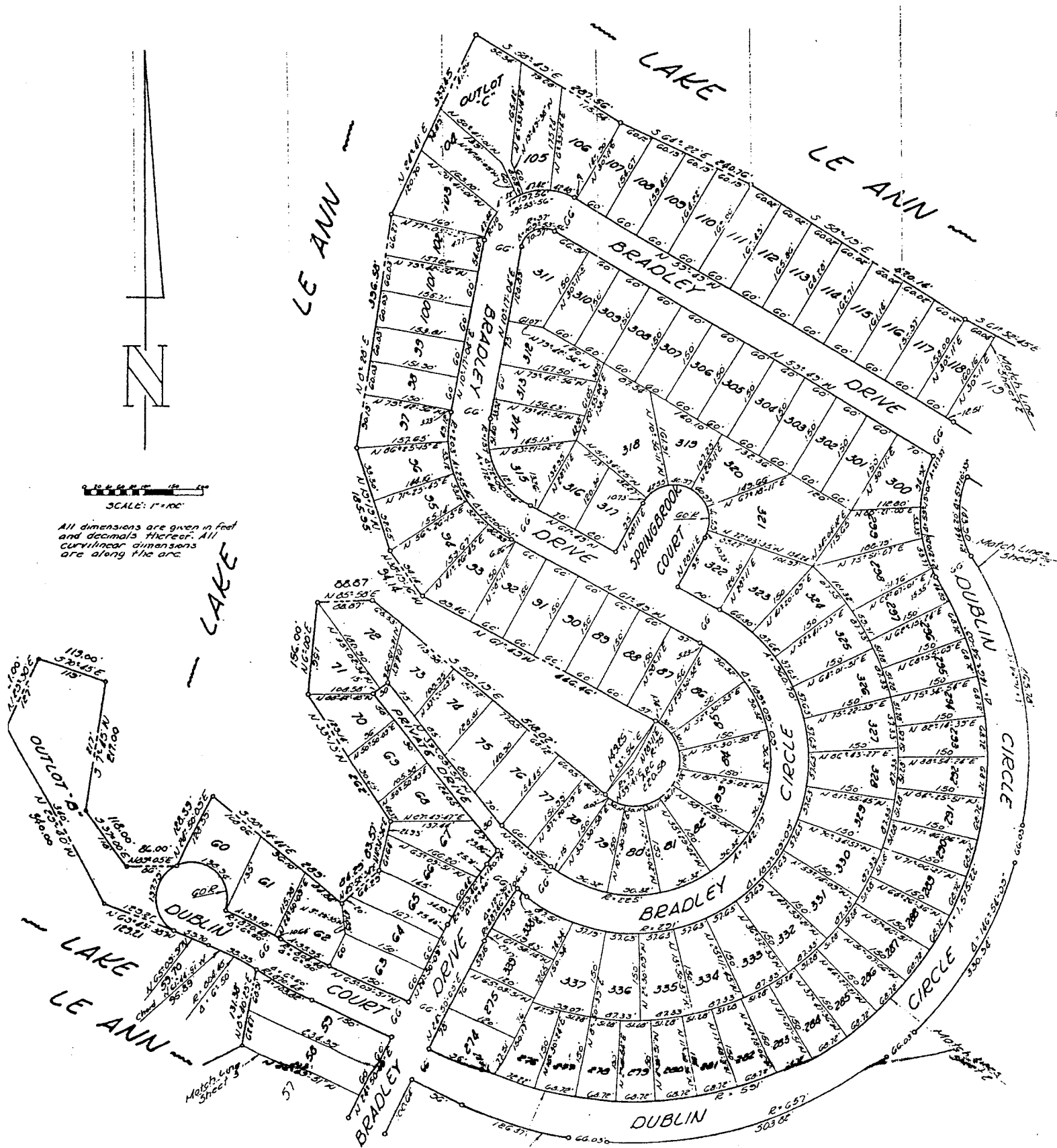


SCALE: 1"=100'
All dimensions are given in feet and decimals thereof. All curvilinear dimensions shown are along the arc.

East 1/2 Corner Section 4
East 1/4 Corner Section 3

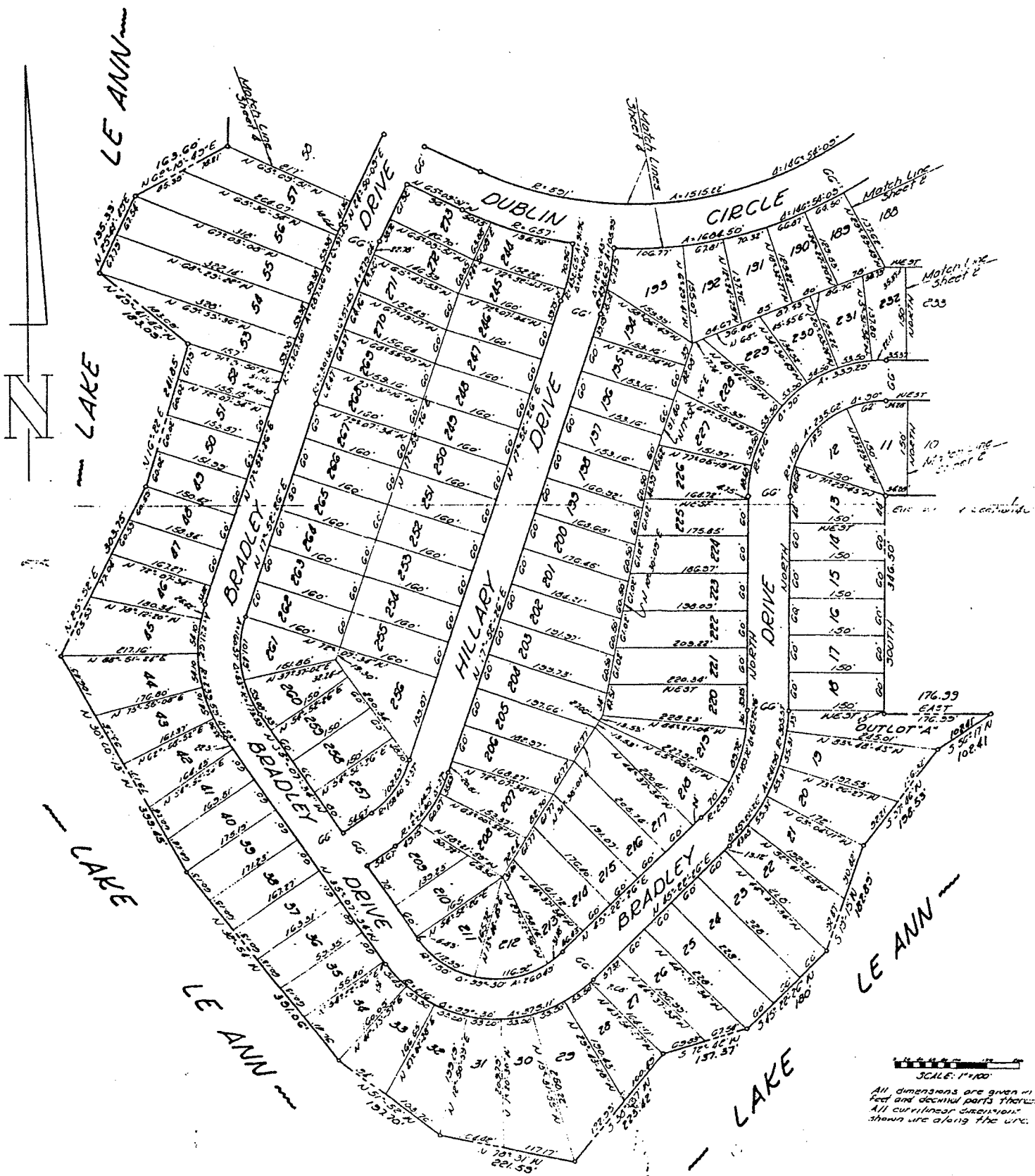
"LAKE LE ANN - CHERRY PARK"

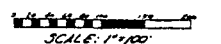
BEING A SUBDIVISION PART OF THE EAST 1/2 OF SECTION 4, and PART OF THE NORTHWEST 1/4 OF SECTION 3, TOWN 5 SOUTH, RANGE 1 WEST SOMERSET TOWNSHIP, HILLSDALE COUNTY, MICHIGAN



"LAKE LE ANN - CHERRY PARK"

BEING A SUBDIVISION PART OF THE EAST 1/2 OF SECTION 4, and PART OF THE NORTHWEST 1/4 OF SECTION 3, TOWN 5 SOUTH, RANGE 1 WEST SOMERSET TOWNSHIP, HILLSDALE COUNTY, MICHIGAN





 SCALE: 1"=100'
 All dimensions are given in feet and decimal parts thereof.
 All curvilinear dimensions shown are along the arcs.